



# CAREERS BEYOND ACADEMIA



## PROGRAMME

3-4pm EEG Equipment Demonstration

4-4.45pm **DR CHRISTOPHER MADAN**

Assistant Professor  
University of Nottingham

*ACADEMIA AND THE WORLD BEYOND*

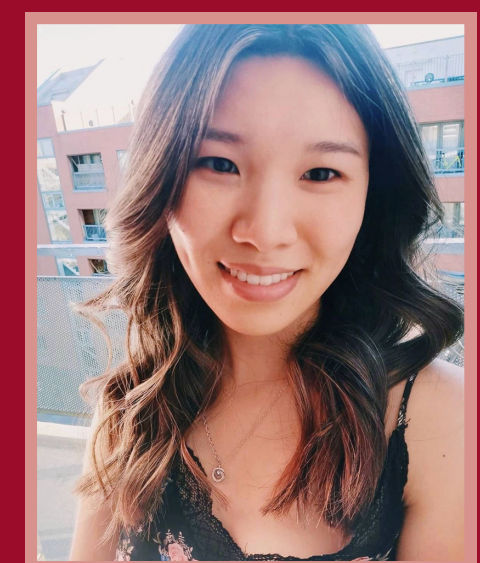


4.45-5pm Break

5-5.15pm **VINCI YAU**

Clinical Research Associate  
Medpace

*MY CAREER BEYOND ACADEMIA*



5.15-5.30pm **DR ANDREW HANSON**

Scientific Sales Account Manager  
ANT Neuro Inspiring Technology

*MY CAREER BEYOND ACADEMIA*



5.30-6pm Panel Discussion & Social



THURSDAY, 2ND  
MAY 2024



ROOM 302,  
STUDENTS LIFE  
BUILDING, LJMU,  
LIVERPOOL L3 5AH



3-6PM

Partners:



Organized by:

